



# 14th Annual SCIENCE UNLIMITED EXPO 2026

04 Aug at 08:00 – 06 Aug at 14:00

## Call for Participants and Funding



*Kwalata Community Development Initiative*

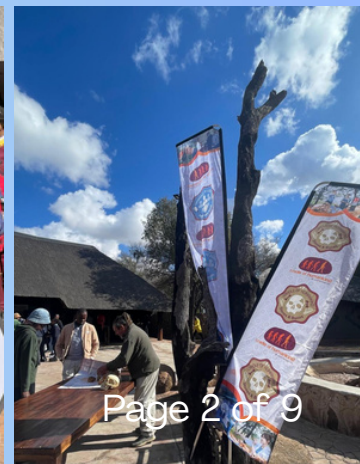


*Alive in the Community*



# CONTENTS

What is Science Unlimited?	3
14th Annual Success Story	4
Kwalata Game Lodge	5
Why Science Education?	6
What the Expo focuses on	7
Expanding Horizons	8
Previous Participants	9



# What is Science Unlimited?

Science Unlimited is a nationally recognized, high-impact science education and awareness initiative designed to engage and inspire primary and high school learners. Held annually, it delivers a dynamic program of curriculum-aligned science, mathematics, and technology shows, workshops, exhibitions, and live demonstrations. The project offers engaging, hands-on learning experiences that reveal the real-world relevance of science and technology, inspiring both learners and educators. By showcasing exciting career pathways and practical applications, Science Unlimited opens young minds to the vast possibilities within the STEM fields.



## Kwalata Community Development Initiative



# 13th Annual Success Story

## The Power of Science – Launch of the TART Telescope

- The Transient Array Radio Telescope (TART) was recently installed and launched at the Kwalata Science Unlimited EXPO (05–07 August 2025), marking a major achievement in hands-on science education and public engagement. The launch demonstrates the event’s continued commitment to inspiring learners and showcasing innovative scientific projects.
- TART is a low-cost, open-source radio telescope developed by the University of Otago in New Zealand. It is designed for wide-field sky monitoring and the detection of transient radio events, making it a powerful tool for both research and educational purposes. Its accessibility allows students and communities to engage directly with cutting-edge science.
- In South Africa, TART is part of a SARAIO-led initiative, with installations at Stellenbosch University and Rhodes University. These sites support research, training, and capacity building, aligning with the Square Kilometre Array (SKA) programme and helping to develop the next generation of scientists and engineers across the continent.



# Kwalata Game Lodge

## ***A Legacy of Impact Through Tourism and Conservation:***

- Since 1994, Kwalata Game Lodge has evolved from a youth-focused bush camp into a beacon of responsible tourism and conservation.
- Nestled within the Dinokeng Big 5 Game Reserve, Kwalata has been instrumental in transforming the region into a vibrant eco-tourism destination while uplifting the surrounding Hammanskraal community.
- At the heart of Kwalata's success is its people. Our dedicated staff and the family values we uphold form the foundation of everything we do. Guided by principles deeply rooted in South African culture, we emphasize interconnectedness, compassion, and collective responsibility. Values such as respect, human dignity, solidarity, and a commitment to community harmony are not just ideals they are lived every day at Kwalata.
- For over 30 years, the lodge has inspired thousands of young minds through environmental education, leadership camps, and school-based science and nature programs. These immersive experiences connect children to wildlife, conservation, and cultural heritage planting seeds for future leaders and environmental stewards.

*We strive to engage, enable and empower the Southern African community to create a sustainable foundation for development and upliftment.*



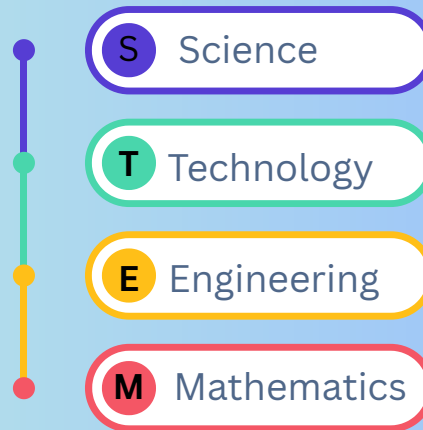
# Why Science Education?

“There’s a **direct correlation** between a nation’s wealth and its scientific and technology capacity. We need to make a concerted national effort to promote science and technology as a means of **improving living standards**”

Science education fosters critical thinking, problem-solving, and creativity, which are essential for understanding the world and tackling real-world issues.

Lays the foundation for a future **STEM** workforce and empowers individuals to make informed decisions based on evidence.

Igniting passion for



# The Expo Focuses On:

1. Earth Science / Geography
  - Planet Earth : Land, Water, Air Climate
  - Change
  - Soil & Soil Erosion
  - Non-conventional Energy Resources
  - Conservation
2. LIFE Science
  - Biosphere Concept Interactions :
  - Human vs Environment
  - Eco-tourism
  - Biodiversity ( The 6th Extinction)
3. Healthy, Responsible and Green Living
  - Renewable Energy
  - Recycling (Reduce & Re-use)
  - Fitness & Sport & Nutrition
  - Permaculture
  - Drug & Alcohol Abuse
  - Communicable diseases TB &
  - HIV/AIDS Lifestyle diseases
  - Hypertension Cardiovascular, Diabetes, Cancers)

## Objective:



# Expanding Horizons

## Kwalata Science Unlimited EXPO 2026

This year, the 2026 Kwalata Science Unlimited EXPO is going bigger than ever! In partnership with GDE, we aim to welcome approximately 600–800 Primary and High school learners per day, providing them with an immersive, hands-on science experience.

Learners from Hammanskraal, located west of the Dinokeng Game Reserve, and surrounding areas are invited to explore cutting-edge scientific projects, engage with interactive exhibits, and ignite their curiosity in STEM. This growing reach offers an exciting opportunity for sponsors to support science education and inspire the next generation of innovators and problem-solvers.

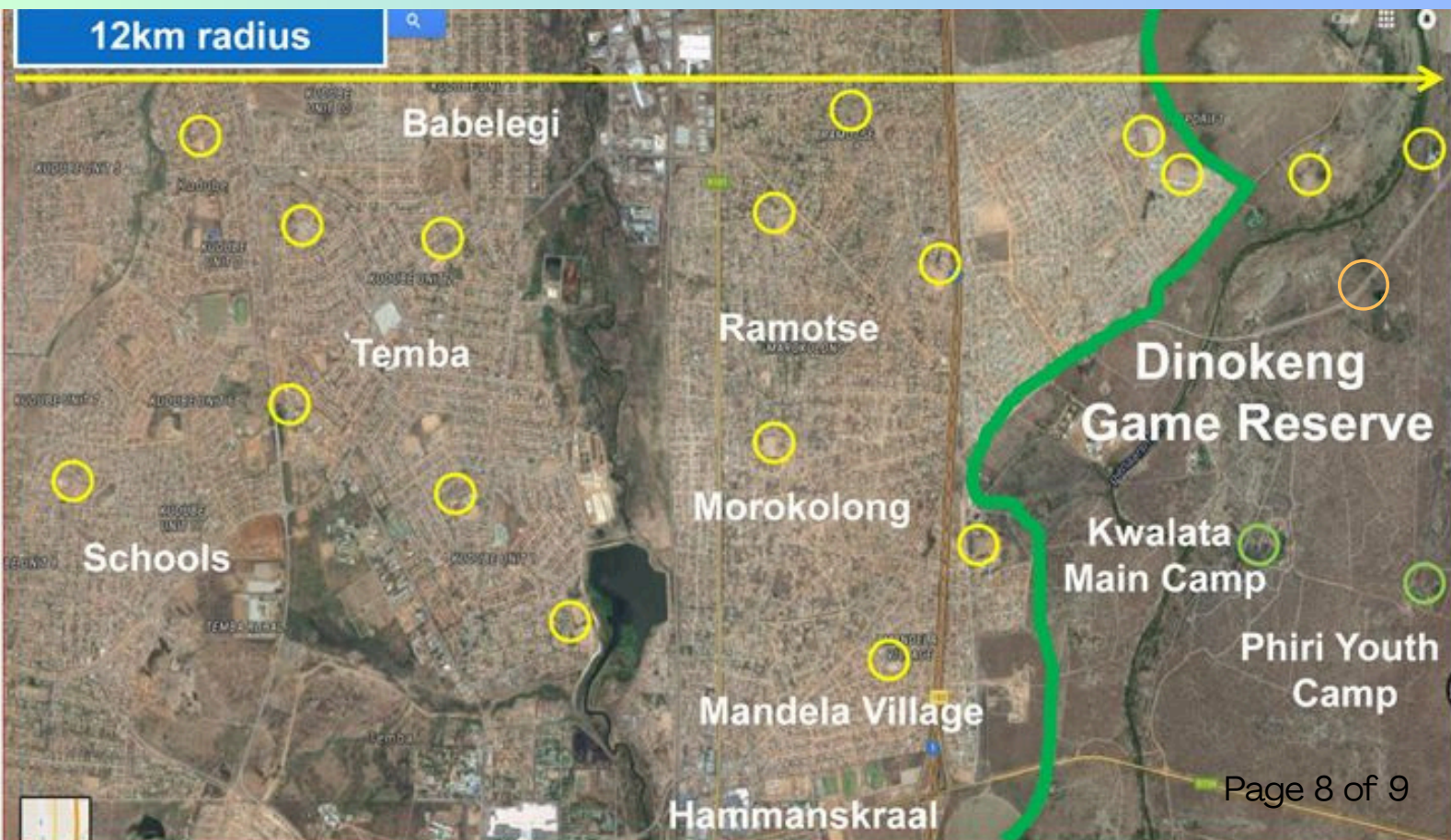
- **Bus transport**
- **The three day program Lunch**
- **Event Infrastructure & Logistics**
- **Educational Materials**

The aim is to enhance education, ignite a passion for science and showcase careers and opportunities offered through science and education.

**To confirm your spot, complete this [GOOGLE FORM](#)**



## Location on Map



# Previous Participants



## Contact

Kwalata Community Development Initiatives:

Neo Makhafola

✉ [cdi@kwalata.co.za](mailto:cdi@kwalata.co.za)

☎ 064 868 2265

Charl Pretorius – Maredi

✉ [charl@kwalata.co.za](mailto:charl@kwalata.co.za)

☎ 083 459 9075

To confirm your spot, complete this GOOGLE FORM

📘 Like our Facebook page KCDI or

🌐 Visit our Website

**“Education”** The key to a sustainable Community